

Work Session

Agenda Item #	1
Meeting Date	February 17, 2016
Prepared By	Alan Goldberg Chief of Police
Approved By	Suzanne R. Ludlow City Manager

Discussion Item	Police Department Annual Report for Calendar Year 2015
Background	Chief Goldberg will present the Department's Annual Report for Calendar Year 2015 at the Council Work Session and answer questions from the Council.
Policy	Council Priorities: An Engaged, Responsive, Service-oriented Government; A Livable Community for All
Fiscal Impact	N/A
Attachments	Crime Report by Ward
Recommendation	Hear presentation
Special Consideration	

Takoma Park Police Department

Crime Analysis Final Crime Report

(January 1 – December 31, 2015)



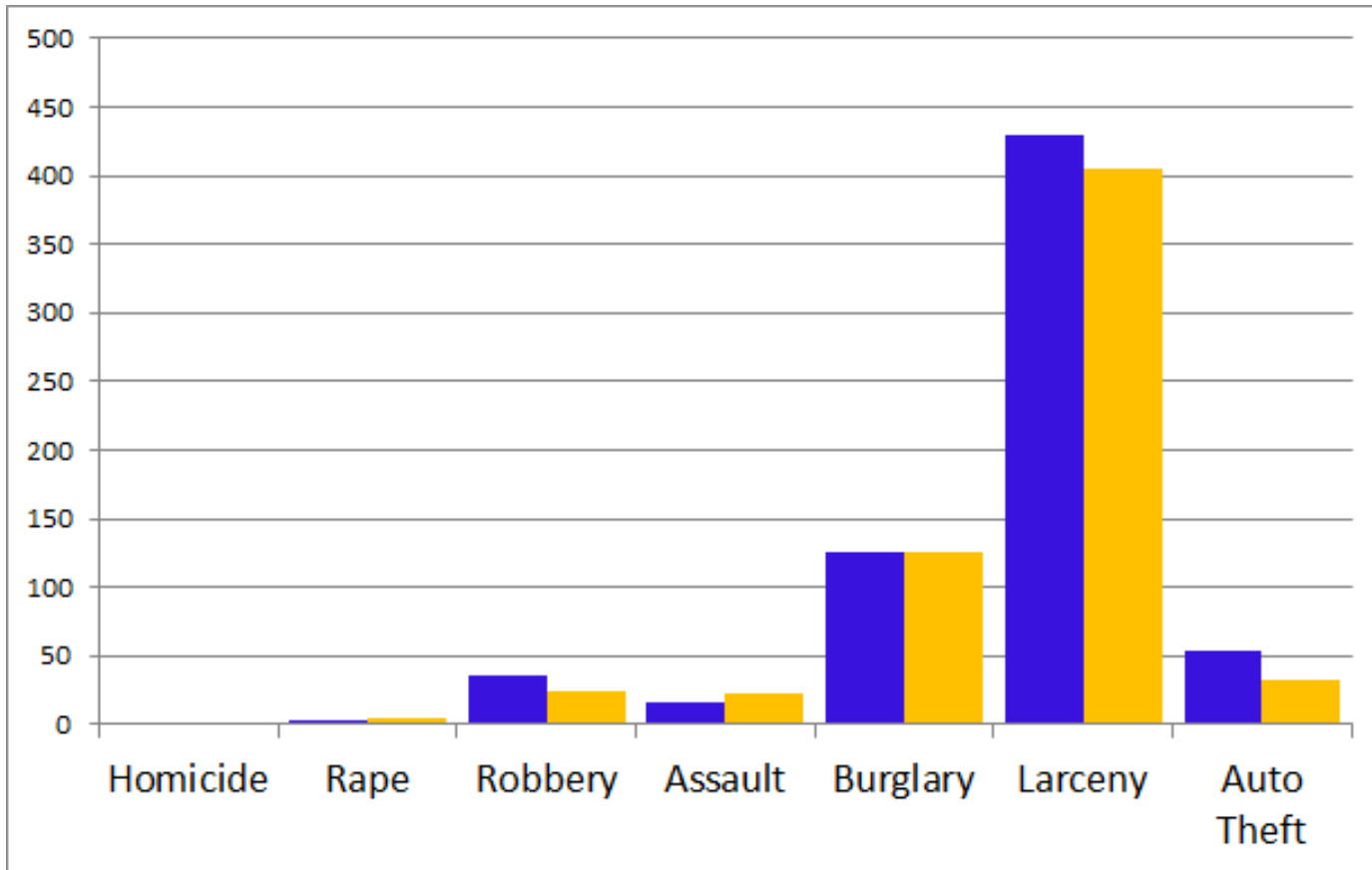
Total Crime – Takoma Park

(January 1 – December 31)

CRIME	2008	2009	2010	2011	2012	2013	2014	2015
Homicide	0	0	0	1	0	1	1	1
Rape	4	3	1	3	1	2	3	5
Robbery	80	46	48	32	42	36	35	25
Assault	38	35	26	26	16	20	17	23
Burglary	135	104	150	109	73	125	125	126
Larceny	383	429	364	317	364	302	430	405
Auto Theft	99	61	63	77	54	42	53	32
TOTAL	739	678	652	565	550	528	664	617

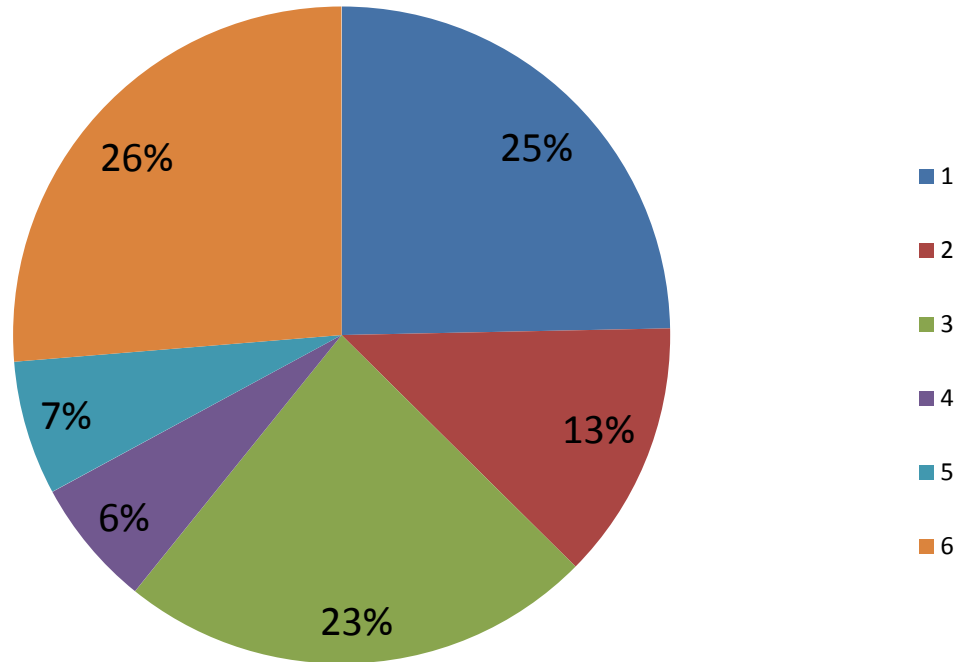
Total Crime – Takoma Park

(Comparison 2014 to 2015)



Total Crime – by Ward

(January 1 – December 31)



Total Crime – Ward 1

CRIME	JAN	FEB	MAR	APR	MAY	JUN	JUL	AUG	SEP	OCT	NOV	DEC	TOTAL
Homicide	0	0	0	0	0	0	0	0	0	0	0	0	0
Rape	0	0	0	0	1	0	1	0	0	0	0	0	2
Robbery	0	1	1	0	0	0	1	0	0	0	1	1	5
Assault	1	0	1	0	0	0	0	0	0	0	0	0	2
Burglary	3	0	1	1	4	4	6	3	3	5	4	6	40
Larceny	7	6	4	4	8	8	9	7	15	14	8	7	97
Auto Theft	0	0	0	2	1	0	0	0	1	1	1	0	6
TOTAL	11	7	7	7	14	12	17	10	19	20	14	14	152

CRIME	Ward	City	% of Total Crime
Homicide	0	1	0.0
Rape	2	5	40.0
Robbery	5	25	20.0
Assault	2	23	8.7
Burglary	40	126	31.7
Larceny	97	405	24.0
Auto Theft	6	32	18.8
TOTAL	152	617	24.6

Total Crime – Ward 2

CRIME	JAN	FEB	MAR	APR	MAY	JUN	JUL	AUG	SEP	OCT	NOV	DEC	TOTAL
Homicide	0	0	0	0	0	0	0	0	0	0	0	0	0
Rape	0	0	0	0	0	0	0	0	0	0	0	0	0
Robbery	0	0	0	0	0	0	0	0	0	1	0	0	1
Assault	0	1	0	0	0	0	2	0	0	0	0	0	3
Burglary	4	0	0	0	1	1	5	1	2	1	1	1	17
Larceny	1	2	3	7	7	5	8	6	2	5	4	1	51
Auto Theft	0	1	1	1	0	1	0	0	1	0	1	0	6
TOTAL	5	4	4	8	8	7	15	7	5	7	6	2	78

CRIME	Ward	City	% of Total Crime
Homicide	0	1	0.0
Rape	0	5	0.0
Robbery	1	25	4.0
Assault	3	23	13.0
Burglary	17	126	13.5
Larceny	51	405	12.6
Auto Theft	6	32	18.8
TOTAL	78	617	12.6

Total Crime – Ward 3

CRIME	JAN	FEB	MAR	APR	MAY	JUN	JUL	AUG	SEP	OCT	NOV	DEC	TOTAL
Homicide	0	0	0	0	0	0	0	0	0	0	0	0	0
Rape	0	0	0	0	0	0	0	0	0	0	0	1	1
Robbery	0	0	0	0	1	0	0	0	0	0	0	0	1
Assault	2	0	0	0	0	0	0	0	0	0	0	0	2
Burglary	4	1	3	4	2	5	4	8	3	3	8	5	50
Larceny	2	0	2	10	17	14	8	10	10	2	5	4	84
Auto Theft	0	1	0	0	0	0	2	1	0	0	2	0	6
TOTAL	5	4	4	8	8	7	15	7	5	7	6	2	144

CRIME	Ward	City	% of Total Crime
Homicide	0	1	0.0
Rape	1	5	20.0
Robbery	1	25	4.0
Assault	2	23	8.7
Burglary	50	126	39.7
Larceny	84	405	20.7
Auto Theft	6	32	18.8
TOTAL	144	617	23.3

Total Crime – Ward 4

CRIME	JAN	FEB	MAR	APR	MAY	JUN	JUL	AUG	SEP	OCT	NOV	DEC	TOTAL
Homicide	0	0	0	0	0	0	0	0	0	0	0	0	0
Rape	0	0	0	0	0	0	0	0	0	0	0	0	0
Robbery	0	0	0	0	0	0	0	0	0	0	0	0	0
Assault	0	0	0	0	1	0	0	1	0	0	0	0	2
Burglary	0	0	0	0	0	1	0	0	0	1	1	0	3
Larceny	1	2	1	3	0	5	3	4	6	1	1	1	28
Auto Theft	0	0	0	0	1	1	2	1	0	0	0	0	5
TOTAL	1	2	1	3	2	7	5	6	6	2	2	1	38

CRIME	Ward	City	% of Total Crime
Homicide	0	1	0.0
Rape	0	5	0.0
Robbery	0	25	0.0
Assault	2	23	8.7
Burglary	3	126	2.4
Larceny	28	405	6.9
Auto Theft	5	32	15.6
TOTAL	38	617	6.2

Total Crime – Ward 5

CRIME	JAN	FEB	MAR	APR	MAY	JUN	JUL	AUG	SEP	OCT	NOV	DEC	TOTAL
Homicide	0	0	0	0	0	0	0	0	0	0	0	0	0
Rape	0	0	0	0	0	0	0	0	0	0	0	0	0
Robbery	1	0	1	0	0	0	0	0	0	0	0	0	2
Assault	0	0	0	0	0	1	0	3	0	1	0	0	5
Burglary	1	0	0	0	0	1	1	0	0	0	1	0	4
Larceny	2	2	0	3	2	3	0	6	1	5	2	1	27
Auto Theft	0	0	0	1	0	0	0	0	1	0	1	0	3
TOTAL	4	2	1	4	2	5	1	9	2	6	4	1	41

CRIME	Ward	City	% of Total Crime
Homicide	0	1	0.0
Rape	0	5	0.0
Robbery	2	25	8.0
Assault	5	23	21.7
Burglary	4	126	3.2
Larceny	27	405	6.7
Auto Theft	3	32	9.4
TOTAL	41	617	6.6

Total Crime – Ward 6

CRIME	JAN	FEB	MAR	APR	MAY	JUN	JUL	AUG	SEP	OCT	NOV	DEC	TOTAL
Homicide	0	0	0	0	0	0	0	0	0	0	1	0	1
Rape	0	1	0	0	0	0	0	1	0	0	0	0	2
Robbery	0	0	1	1	1	0	1	2	4	1	4	1	16
Assault	0	1	0	1	1	0	1	0	2	2	1	0	9
Burglary	4	1	1	0	0	0	1	2	1	1	1	0	12
Larceny	13	8	11	4	7	8	11	11	14	12	9	8	116
Auto Theft	0	2	0	0	1	0	0	1	1	0	1	0	6
TOTAL	17	13	13	6	10	8	14	17	22	16	17	9	162

CRIME	Ward	City	% of Total Crime
Homicide	1	1	100.0
Rape	2	5	40.0
Robbery	16	25	64.0
Assault	9	23	39.1
Burglary	12	126	9.5
Larceny	116	405	28.6
Auto Theft	6	32	18.8
TOTAL	162	617	26.3